

CONSTRUCTION

The Construction (Design and Management) Regulations 2015 came into force in the UK on April 6th 2015. The regulations set out what people within the Construction Industry need to do to protect themselves and others from harm.

When working within the Construction Industry you need to sensibly plan any work you are doing to reduce the risks involved from start to finish. You must ensure you have the right people for the job who understand what they need to do. If there are any risks involved whilst carrying out the work you must effectively communicate the information to the relevant people and make sure risks are being properly managed.



In 2016 Build UK introduced a new colour coding system for safety helmets.

They introduced the system to make it easier to identify people on site.



(P) = Portrait Sign

Code	Size	Price
MM123AJRP	400 x 300mm (P)	£18.12
MM123AXRP	800 x 600mm (P)	£41.08

Remember: This is for construction sites only.

Banner Signs

Large format banner signs are ideal for use on construction sites and at events. Eyelets enable banner to be simply secured with cable ties. Available in high quality 500gsm PVC with brass eyelets.

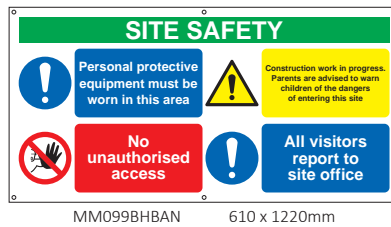
Size: 610 x 1220mm (H x W)

For fixings please see page 5.

Code	Weight	BAN
See below each illustration for code	500gsm	£57.99



MM092BHBAN 610 x 1220mm



MM099BHBAN 610 x 1220mm



MD096BHBAN 610 x 1220mm

Do's and Don'ts Safety Signs

New Do's and Don'ts safety signs, help provide clear instructions to visitors and employees on what they should and shouldn't do around the workplace.

All signs are available in A4, A3 or A2 and come in self adhesive vinyl or 1.2mm Rigid Plastic.

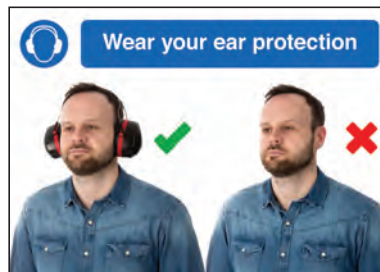
Please specify size and material



MD140



MD142



MD143



MM109



MM110



MM111



MM116

How To Order

How to order your Safety Signs:

1. Select product code of your chosen design and size i.e. **MD140**.
2. Then add either **RP (Rigid)** or **SAV (Self Adhesive)** after your code to determine your required material, i.e. **MD140RP** for rigid.

Code	Size (H x W)	Rigid	S/A
See below each illustration	210 x 297mm (L) (A4)	£11.09	£7.33
	297 x 420mm (L) (A3)	£18.66	£12.10
	420 x 594mm (L) (A2)	£30.33	£16.15



Site Safety Boards

Every workplace needs to be a safe environment for the people and vehicles using it. Use clear signs to tell drivers and pedestrians about the routes they should use. Make sure when using signs, that they are maintained so they are always visible, clear and easy to understand.

Please note codes ending AC are manufactured on a 3mm material. 1.2mm Rigid Plastic is available (R).



HA28333 400 x 300mm
HA28346AC 800 x 600mm



HA20433 400 x 300mm
HA20446AC 800 x 600mm



HA28133 400 x 300mm
HA28146AC 800 x 600mm



MS06133 400 x 300mm



MM098ASRP 800 x 600mm



MM105ASRP 800 x 600mm



MM094ASRP 800 x 600mm



MM099ASRP 800 x 600mm

(L) = Landscape Sign (P) = Portrait Sign

Code	Size (H x W)	Rigid	3mm
See below each illustration for code	300 x 400mm (L)	£18.12	-
	400 x 300mm (P)	£18.12	-
	450 x 600mm (L)	£34.35	-
	800 x 600mm (P)	£41.08	£44.80



MM077BERP 300 x 400mm
MM077AMRP 450 x 600mm



MM088BERP 300 x 400mm
MM088AMRP 450 x 600mm

Construction Signs

Every workplace needs to be a safe environment for the people and vehicles using it. Use clear signs to tell your workers and visitors the precautions they should take. Make sure when using signs, that they are maintained so they are always visible, clear and easy to understand.

Available in 1.2mm Rigid.

Code	Size (H x W)	Price
See below each illustration for code	600 x 800mm	£41.08
	800 x 600mm	£41.08



MM097ASRP 600 x 800mm



MM096ASRP 600 x 800mm



MM095ASRP 600 x 800mm



MS06041AC 600 x 800mm



MM087ASRP 600 x 800mm



MS07646ACR 600 x 800mm



MS05241ACR 600 x 800mm



MM092ASRP 800 x 600mm

Site Safety Sign Packs



Code	Description	Price
CMP02	Site Navigation Sign Pack	£87.45

Code	Description	Price
CMP03	Site Navigation Sign Pack	£136.00



Prohibition Construction Signs

Help inform staff and visitors on your site rules and regulations. All signs are manufactured on 1.2mm Rigid Polypropylene.
For sign fixings please see page 5.



PRO72BERP 300 x 400mm
PRO72AMRP 450 x 600mm



PRO73BERP 300 x 400mm
PRO73AMRP 450 x 600mm



PRO57BERP 300 x 400mm
PRO57AMRP 450 x 600mm



PRO70BERP 300 x 400mm
PRO70AMRP 450 x 600mm



PRO79BERP 300 x 400mm
PRO79AMRP 450 x 600mm



PRO84BERP 300 x 400mm
PRO84AMRP 450 x 600mm



CON17BERP 300 x 400mm
CON17AMRP 450 x 600mm



CON02BERP 300 x 400mm
CON02AMRP 450 x 600mm



CON04BERP 300 x 400mm
CON04AMRP 450 x 600mm

Code

Size (H x W)

Price

See below each
illustration for code

300 x 400mm
450 x 600mm

£18.12
£34.35

Warning Construction Signs

Warn visitors and staff of any hazards on or around your site.
Signs are available in 1.2mm rigid polypropylene..



HZ102BERP 300 x 400mm
HZ102AMRP 450 x 600mm



HZ143BERP 300 x 400mm
HZ143AMRP 450 x 600mm



HZ239BERP 300 x 400mm
HZ239AMRP 450 x 600mm



HZ285BERP 300 x 400mm
HZ285AMRP 450 x 600mm



HZ288BERP 300 x 400mm
HZ288AMRP 450 x 600mm



HZ290BERP 300 x 400mm
HZ290AMRP 450 x 600mm



HZ162BERP 300 x 400mm
HZ162AMRP 450 x 600mm



HZ301BERP 300 x 400mm
HZ301AMRP 450 x 600mm



HZ303BERP 300 x 400mm
HZ303AMRP 450 x 600mm



MM088BERP 300 x 400mm
MM088AMRP 450 x 600mm



MM077BERP 300 x 400mm
MM077AMRP 450 x 600mm

For our range of
stanchion signs
please see
pages 78-80

Code	Size (H x W)	Price
See below each illustration for code	300 x 400mm 450 x 600mm	£18.12 £34.35



Mandatory Construction Signs

Hard hats must still be worn, even on well run sites as head injuries may still occur. You should regularly check that PPE is being used and being used in the correct way.

Signs are manufactured on 1.2mm Rigid Polypropylene.



MD098BERP 300 x 400mm
MD098AMRP 450 x 600mm



MD006BERP 300 x 400mm
MD006AMRP 450 x 600mm



MD088BERP 300 x 400mm
MD088AMRP 450 x 600mm



MD096BERP 300 x 400mm
MD096AMRP 450 x 600mm



MD091BERP 300 x 400mm
MD091AMRP 450 x 600mm



MD095BERP 300 x 400mm
MD095AMRP 450 x 600mm



MD106BERP 300 x 400mm
MD106AMRP 450 x 600mm



MD115BERP 300 x 400mm
MD115AMRP 450 x 600mm



MD116BERP 300 x 400mm
MD116AMRP 450 x 600mm

Code	Size (H x W)	Price
See below each	300 x 400mm	£18.12
illustration for code	450 x 600mm	£34.35

Site Security Signs

Ensure signs are in place to help deter any criminal action in or around your workplace. Signs are manufactured on 1.2mm rigid polypropylene.



GS051BERP 300 x 400mm
GS051AMRP 450 x 600mm



GS052BERP 300 x 400mm
GS052AMRP 450 x 600mm



GS053BERP 300 x 400mm
GS053AMRP 450 x 600mm



GS038BERP 300 x 400mm
GS038AMRP 450 x 600mm



GS039BERP 300 x 400mm
GS039AMRP 450 x 600mm



GS041BERP 300 x 400mm
GS041AMRP 450 x 600mm



GS042BERP 300 x 400mm
GS042AMRP 450 x 600mm



GS044BERP 300 x 400mm
GS044AMRP 450 x 600mm



GS048BERP 300 x 400mm
GS048AMRP 450 x 600mm

Code	Size (H x W)	Price
See below each illustration for code	300 x 400mm	£18.12
	450 x 600mm	£34.35



Stanchion Signs

These signs are made from 2mm thick rigid foam plastic. Can be easily used to position quickly near to a potential hazard or danger. Suitable for indoor and outdoor use. These signs are suitable for use with the stanchions on the opposite page.

Code	Size (H x W)	Price
See below each illustration	450 x 600mm (L)	£44.63



HA23836D 450 x 600mm



HA04736D 450 x 600mm



HA25336D 450 x 600mm



HA22236D 450 x 600mm



HA04636D 450 x 600mm



HA21336D 450 x 600mm



HA10236D 450 x 600mm



HA06336D 450 x 600mm



MS03336D 450 x 600mm



HA22136D 450 x 600mm



HA22836D 450 x 600mm



MA02936D 450 x 600mm



MA02236D 450 x 600mm



MA03636D 450 x 600mm



MS02736D 450 x 600mm



Construction Signs



Turn to
page 72-73



ML01536D 450 x 600mm



PH01536D 450 x 600mm



PH02136D 450 x 600mm



ML01936D 450 x 600mm



ML02036D 450 x 600mm



PH04236D 450 x 600mm



PH01736D 450 x 600mm



ML01736D 450 x 600mm

Code	Size (H x W)	Price
See below each illustration	450 x 600mm (L)	£44.63

Economy Works Traffic Signs

An ideal choice for temporary, daytime work areas.

- Manufactured from 2mm Rigid Plastic. Will fit stanchions below.
- Provides a cost-effective solution to the management of traffic on your site.

Code	Size (H x W)	Price
See below each illustration	450 x 450mm	£25.95



R11/T



R13/T



R12/T



R22/T



R14/T



R02/T



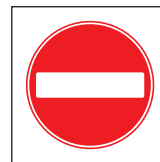
R01/T



R15/T



R10/T



R06/T



R20/T



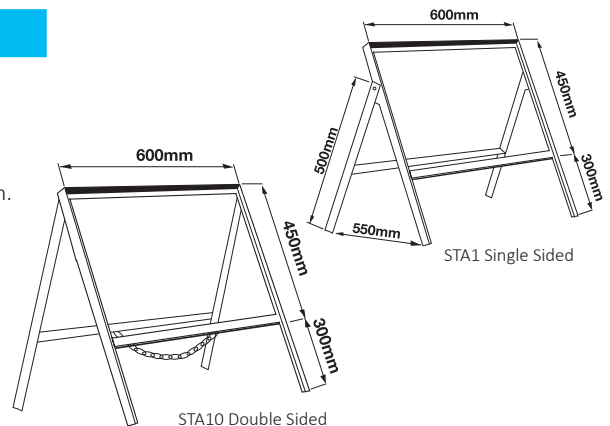
R18/T

Stanchions

These robust Stanchions are the ideal way of displaying signs on a temporary basis.

- Made from steel and painted with grey primer to discourage rusting.
- To hold Stanchion Signs measuring 450 (H) x 600 (W) and 450 x 450mm.
- Clips are provided for retaining either two signs into the Double Sided Stanchion or one sign into the Single Sided Stanchion.

Code	Description	Price
STA1	450 x 600mm Single Sided Stanchion	£32.08
STA10	450 x 600mm Double Sided Stanchion	£36.37
STA2	450 x 450mm Single Sided Stanchion	£46.75
STA11	450 x 450mm Double Sided Stanchion	£64.22





Stanchion Signs

Make sure all drivers and pedestrians know and understand the rules about traffic on site. To help everyone understand, provide induction training for everyone, this includes visitors as well as employees.

Code	Size (H x W)	Price
See below each illustration	450 x 600mm	£34.35
STA1	450 x 600mm Single Sided Stanchion	£32.08
STA10	450 x 600mm Double Sided Stanchion	£36.37



GSC01 450 x 600mm



GSC02 450 x 600mm



GSC04 450 x 600mm



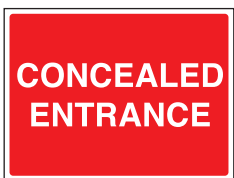
GCS05 450 x 600mm



GSC06 450 x 600mm



GSC03 450 x 600mm



GSC12 450 x 600mm



GSC07 450 x 600mm



GSC09 450 x 600mm



GSC11 450 x 600mm



Flood Safety Stanchion Signs

Use these signs to warn the public about any flood dangers that may lie ahead.

- Signs are 2mm foamed plastic.
- Each sign is 450 x 600mm (HxW) and fit into stanchion frames (see above price box), allowing you to easily move the signs round your premises

Code	Price
See below each illustration	£44.63



TRF0960AMFP



TRF0961AMFP



TRF0962AMFP



TRF0965AMFP



TRF0967AMFP



TRF0969AMFP



TRF0968AMFP



TRF0970AMFP

General Signs

Manufactured from durable 1.2mm Polypropylene or Self-Adhesive vinyl.



GCG01/R 100 x 300mm



GCG02/R 100 x 300mm



GCG03/R 100 x 300mm



GCG09/R 100 x 300mm



GCG11/R 100 x 300mm
GCG11/S 100 x 300mm
PU05/R 50 x 200mm



HG18/R 100 x 300mm
HG18/S 100 x 300mm



HG17/R 100 x 300mm
HG17/S 100 x 300mm



GL93/R 150 x 300mm



HG14/R 200 x 150mm
HG14/S 200 x 150mm



G19B/R 150 x 330mm



G56A/R 300 x 600mm



GL38A/R 100 x 200mm
GL38A/S 100 x 200mm



Code	Size (H x W)	Rigid	S/A
See below each illustration for code	50 x 200mm (L)	£3.33	£2.60
	100 x 200mm (L)	£5.86	£2.90
	100 x 300mm (L)	£5.86	£3.31
	150 x 300mm (L)	£8.64	£5.77
(L) = Landscape Sign	150 x 330mm (L)	£8.64	£5.77
(P) = Portrait Sign	200 x 150mm (P)	£6.81	£4.35
	300 x 600mm (L)	£25.51	£14.25

Vehicle Signage Kit

Ideal for use around construction and building sites.

Signs included: Caution 5mph Site speed limit, Construction traffic, Drivers beware look both ways, Construction traffic arrow left and arrow right and Site entrance.

All signs measure 450x600mm and are manufactured on 1.2mm Rigid Polypropylene.

Code	Size (H x W)	Price
CONKIT7	450 x 600mm Rectangle	£149.00



82 ROLL TOP SIGNS

Roll Top Signs

Work at height means in any place, including at or below ground level (for example in underground workings), where a person could fall a distance liable to cause injury.

Ensure when working at height that all work has been properly planned, supervised and carried out by people who are competent (this is someone who has the knowledge, skills and the experience) to do the job.

Signs are manufactured on 2mm dibond.

Each sign is 500mm x 300mm (H x W).

Code	Price
See below each illustration	£24.95

**BEST
SELLERS**



HA16253H



HA25353H



HA04753H



PH05753H



PH02053H



MA03653H



MA02953H



MA02153H



ML01553H

Design a Sign

Attachable Scaffolding Safety Signs

Create your own message with this Design-a-Sign service, signs are manufactured using high impact, high rigidity, lightweight composite aluminium.

How to Order a Design-a-Sign

Decide what text you require (we recommend no more than 20 words).

Decide what safety symbol you require.

**Your
Text**

Code	Size (mm)	Price
TB24A	500 x 300	Call for a price

Scaffold Tags



Turn to
page 85

Maintenance Safety Tags

Use these handy tags to give clear warnings and safety messages.

- Made from pre-drilled high impact plastic.
- 110 x 50mm supplied in packs of 10 with 10 wire ties.
- 200 x 100mm supplied in singles with 1 wire tie.

Code	Size (H x W)	Price
See below	110 x 50mm	£13.50
each illustration	200 x 100mm	£10.75



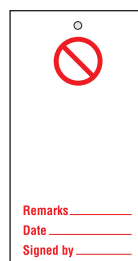
WT32A 110 x 50mm



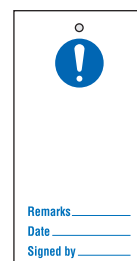
WT26A 110 x 50mm



WT35A 110 x 50mm
WT35B 200 x 100mm



WT39A 110 x 50mm



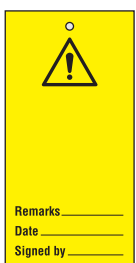
WT55A 110 x 50mm



WT28B 110 x 50mm



WT45A 110 x 50mm



WT53A 110 x 50mm



WT48B 110 x 50mm



WT38B 110 x 50mm



WT41A 110 x 50mm

Lockout Safety Tags

Use these handy tags to give clear warnings and safety messages.

- Made from pre-drilled high impact plastic.
- 110 x 50mm supplied in packs of 10 with 10 nylon ties.
- 160 x 75mm supplied in packs of 10.



Code	Size (H x W)	Price
See below	110 x 50mm	£13.50
each illustration	160 x 75mm	£18.00



160 x 75mm
LTT08B



160 x 75mm
LTT09B



160 x 75mm
LTT10B



160 x 75mm
LTT11B



110 x 50mm LTT01A
160 x 75mm LTT01B



110 x 50mm LTT02A
160 x 75mm LTT02B



110 x 50mm LTT03A
160 x 75mm LTT03B

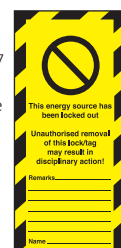


110 x 50mm LTT06A
160 x 75mm LTT06B



110 x 50mm LTT07A
160 x 75mm LTT07B

Codes:
LTT01 – LTT07
display this
legend on the
reverse of
each
safety tag.





Scafftag® is the innovative tagging system that provides a complete safety management system for your workplace. The tagging system consists of two components, a permanent holder which is attached to the equipment and a replaceable status insert.

- Scafftag® empowers employees to make informed and accurate decisions by making information clearly visible.
- Using Scafftag® allows the tracking, usage, maintenance and inspection status of equipment, helping safeguard the safety of employees and others.
- Ensures your company complies with key working legislation:
 - Health and Safety at Work Act 1974.
 - Management of Health and Safety at Work Regulations 1999
 - Construction (Health, Safety and Welfare) Regulations 2007.

We offer a wide range of Scafftag® systems. If you cannot find your required system or need to customise to your specific needs please call us.

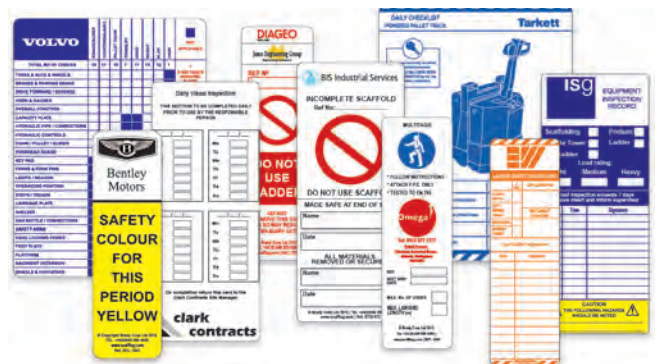


SCAFFTAG

Scafftag® Customisation

You're unique... so are our solutions – unrivalled, limitless customisation options.

- Don't see a solution to your specific requirements?
- Our team of experts can help to fully design and customise your own tagging system to incorporate branding, business characteristics and work processes.





Scaffold Tag

The world's leading scaffold status tagging system is a unique holder and insert system which ensures instant visibility of your scaffolding status and helps you efficiently manage your inspection procedures.

- A Scafftag® should be fitted at all legal access points (normally ladder access from first build to dismantle).
- Holders display a prohibition symbol and the wording "DO NOT USE SCAFFOLD" during erection, awaiting inspection, failure and dismantle stages.
- Scafftag® Kit contains: 10 Holders, 20 Standard Inserts and 1 Pen – replacement inserts are sold separately.
- We recommend that you use the Wallchart and Pocket Guide (semi-rigid PVC) to accompany your Scafftag® equipment. These will increase the employee knowledge and encourage the use of Scafftag® equipment in their routine.

Kit Contents

10 x Holders / 20 x Standard Inserts
1 x Pen
Replacement Inserts sold separately.

Code	Description	Price
SCF01	Kit	£58.21



WARNING
ON ALL LEGAL, REMOVAL ON INTERFERENCE WITH THE WORKING OF THE SCAFFOLD TO PROSECUTION AND FINE

To be completed by a competent person

Requested by:

Drawing Ref. No.:

Location:

Built by:

Date Erected:

Signature:

INSPECTION BEFORE FIRST USE MUST BE COMPLETED AND RECORDED ON FRONT

All queries regarding this structure please contact the following person:

Name:

Tel.:

Comments:

Decommission Date:

Scafftag
TEL: +44 (0)1453 851111
© Copyright Scafftag Ltd 2012
www.scafftag.com

ERECTION AND INSPECTION RECORD

Ref. No.:

Structure to be used for (please tick applicable):

Load Class 1 10.5 to 15.0 Mm / 25 kg/m²	Load Class 4 10.5 to 15.0 Mm / 250 kg/m²
Load Class 2 15.0 to 20.0 Mm / 500 kg/m²	Load Class 5 15.0 to 20.0 Mm / 400 kg/m²
Load Class 3 20.0 to 25.0 Mm / 200 kg/m²	Load Class 6 20.0 to 25.0 Mm / 400 kg/m²

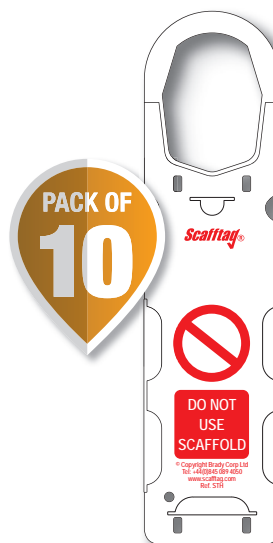
IF LAST INSPECTION EXCEEDS 7 DAYS REMOVE INSERT AND INFORM SUPERVISOR

Record of inspection to be completed by a competent person:

Time	Date	Signature

CAUTION
THE FOLLOWING HAZARDS SHOULD BE NOTED:

Ref: STS1 (en)



Holder -

Pack of 10 holders comes with a pen

Code	Price
SCF28	£48.30

Scafftag
Scaffolding Inspection Guide

DO EN 12811-1: 2003 & Work at Height Regs. 2005
ALL MATERIALS MUST BE OF SOUND USABLE QUALITY

TUBES: Must not be bent, split, distorted or warped. Must not be excessively soft, weak or damaged.

FITTINGS: Must be regularly serviced or replaced.

1. GIN WHEELS: To be secured on to couplers S.M.L. Clearly marked L7 EXCEED 50 KG.

2. GUARD RAILS: Minimum height 1100mm. Working platforms, secured on the standards. An intermediate guard rail provided to limit the gap to 450mm.

3. TOEBOARDS: Minimum height 150mm. Fixed on all working platforms.

4. BOARDING: To be close boarded and end in throughout. Overhang of the boards of any members should not exceed four times their thickness and should not be less than 10mm e.g. detail of 30mm board and 50mm - max 150mm.

5. TRAVELLING: Maximum spacing 2m.

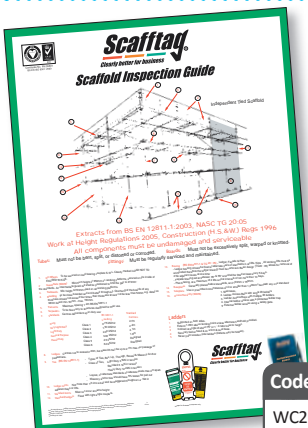
6. TIE RODS: To be fixed only to structures designed for their use.

Ref: STS1

PACK OF 5

Pocket Guide

Code	Qty.	Price
SCF05	5	£5.22



Wallchart

Code	Price
WC209	£22.75



Blue Book

Code	Description	Price
SCF33	Blue Book	£28.45

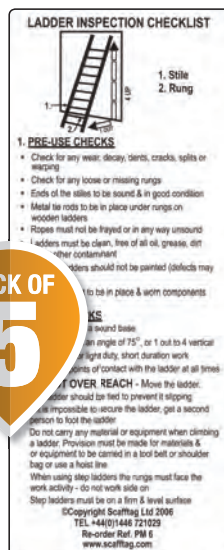


LadderTag®

A must for all ladders, kicksteps and podiums. Help eliminate accidents and improve your inspection management process.

- Unique ladder status tagging system ensures efficient inspections and legal compliance. Regular and detailed inspections of ladders both temporary and fixed must be carried out.
- Laddertag® is robust and highly visible, displaying information on the ladder class and inspection record.
- The reverse of the insert displays a quick reference inspection checklist.

PACK OF
5



Kit Contents

10 x Holders, 10 x Standard Inserts, 1 x Pen.
Replacement Inserts sold separately.

Code	Description	Price
SCF09	Kit	£43.59

Code	Desc.	Price
SCF11	Pocket Guide	£5.22



Wallchart

Code	Price
WC211	£22.75

Insert



Insert Front

Insert Back

Code	Qty.	Price
SCF10A	10	£8.20
SCF10B	50	£36.90

Holder

Holders come with a pen

PACK OF
10



Code	Price
SCF32	£37.18

Book



Code	Description	Price
SCF34	Book	£28.45



Laddertag® Complete Kit

Everything you need to comply with ladder regulations and requirements.

- Convenient kit makes ladder inspections quick and efficient.
- Ladder Register Book provides inspection reports as well as guidance on legislation and risk assessments.

Code	Description	Price
SCF61	Kit	£84.00

Kit Contents

- 1 x Yellow Book
- 10 x Adhesive Pads
- 1 x Permanent Marker
- 10 x Ladder Tag Holders
- 10 x Inserts
- 1 x Pocket Memo
- 1 x Ladder Guide Poster which gives advice on maintenance and inspection.





TowerTag®

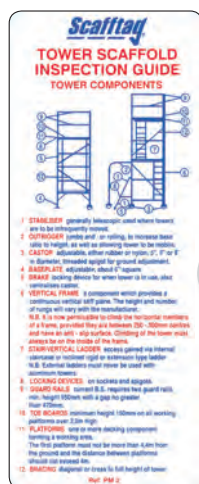
Designed for all types of mobile towers to prevent working at height hazards.

- Our unique holder and insert system enables you to display latest inspection, maintenance and identification information at the point of use.
- A TowerTag® should be fitted at all legal access points (normally ladder access) from first build to dismantle.
- The insert allows you to clearly display the movement of each tower scaffold and the maximum safe working load.
- The holder displays a prohibition symbol and the wording "DO NOT USE THIS TOWER" if the tower has failed or is awaiting inspection.
- Semi-rigid PVC Pocket Guide and Wallchart are also available to train employees and create awareness of this unique product.
- Pack of 10 holders also includes a pen

Code	Description	Price
SCF06	Kit	£58.21

Kit Contents

10 x Holders, 20 x Standard Inserts, 1 x Pen
Replacement Inserts sold separately.



Code	Price
SCAF056	£48.30

Pocket Guide

Code	Qty.	Price
SCF08	5	£5.22

Wallchart

Code	Price
WC208	£22.75



Standard Inspection Insert

This tower is for the safe use of:

TOWER ERECTION AND INSPECTION RECORD
VERY LIGHT DUTY USE ONLY

WARNING: TOWER LOAD
2 Men + Light Tools +
Light Weight
Materials
PER PLATFORM LEVEL

Ref No.: _____
Date Erected: _____
Erected by: _____
Supervisor: _____

Y POWER HAS BEEN ERECTED FOR 7 DAYS
AN INSPECTION MUST BE COMPLETED

Record of inspection to be completed by
a competent person.

Move Ref	Date	Time	Signature

This tower is to be used by competent persons in accordance with the manufacturer's instructions.

WARNING
IMMEDIATE DANGER: DISTURBANCE WITH
THIS TAG COULD BECOME FATAL TO
PERSONS ON AND AROUND

Tower movements:

Move Ref	Location
(1)	
(2)	
(3)	
(4)	
(5)	
(6)	
(7)	
(8)	

Details of tower (please tick applicable):

Internal ☐ External ☐ Mobile ☐ Static ☐

Max. Height of Platform: _____

(Please write Y for 'Yes' and N for 'No')

Stabilizers Fitted Y/N ☐ Tied In Y/N ☐

Ladder Access Y/N ☐ Stair Access Y/N ☐

**REMOVE MATERIALS AND EVACUATE ALL
PERSONS BEFORE MOVING TOWER
MANUALLY AT GROUND LEVEL ONLY**

All queries regarding this structure please
contact the following person:

Name: _____
Tel: _____

Scafftag
The Green Book for Scaffold
Tel: 01454 681111 Fax: 01454 681112
Email: sales@scafftag.com

Code	Description	Price
SCF35	Green Book	£10.78

Code	Qty.	Price
SCF07A	10	£10.44
SCF07B	50	£46.95

MEWP Tag®

Control frequent inspections, maintenance and identification of Mobile Elevating Work Platforms.

- Inserts contain an easy-to-follow pre-use operator checklist on the front.
- Each insert has the facility to record up to 32 inspections on the reverse.
- Kit contains 10 MEWP Tag Holders, 10 MEWP Tag Inserts and 1 Permanent Marker.



Holder



Insert Front



Insert Back



Code	Description	Price
LOT0077	Mewp Kit	£60.50
LOT0078	Replacement Holders Pack of 10	£46.75
LOT0079	Replacement Inserts Pack of 10	£9.95

PodiumTag®

Weatherproof and UV protected to withstand the toughest environments.

- Record up to 16 checks on each insert.
- Back of insert consists of a "pre-use" and "in-use" checklist for reference.
- Kit contains 10 Holders, 10 Podium Inserts and 1 Permanent Marker – Replacement Inserts available separately.



Holder

Insert front

Insert Back



Code	Description	Price
SCAF069	Podium Tag Kit	£43.60
SCAF070	Replacement Inserts Pack of 10	£10.95
SCAF071	Replacement Inserts Pack of 50	£44.75
SCAF072	Podium Inspection Pocket Guides Pack of 5	£5.22

Multitag

Designed for use on machinery where space can be restricted or a tag will not fit.

- Multitag helps you keep an up to date record for inspections.
- Holders are made of durable plastic.
- Inserts are manufactured on durable polypropylene.
- Kit contains:
 - 10 holders
 - 10 inserts
 - 1 pen
- Inserts are also sold separately.



301AVA100



Code	Description	Price
301AVA100	Multitag Kit	£40.99
300YVB100	Pack of 10 Inserts	£10.95
300YVA100	Pack of 50 Inserts	£44.75

Entrytag

Entrytag has been designed to be used alongside existing permits to work for confined spaces.

- Entrytags should be placed at the entrance of any confined space.
- Inserts allow you to maintain an inspection record, and provide information to workers on the correct PPE they should be wearing.
- Holders are made of durable plastic.
- Inserts are manufactured on durable polypropylene.
- Kit contains:
 - 10 holders
 - 10 inserts
 - 1 pen
- Inserts are also sold separately.



301BIA100

Code	Description	Price
301BIA100	Entrytag Kit	£63.73
300ZBA100	Pack of 10 Inserts	£20.97
300ZBB100	Pack of 50 Inserts	£104.48



Plant & Machinery Microtag®



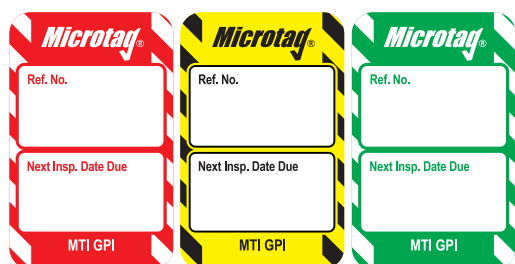
Ideal for portable appliance testing (PAT) and identification of tools and equipment.

- Inspection tags are suitable to help clearly display the up-to-date status of your fall arrest equipment.
- Next test Due tags are ideal for portable appliance testing (PAT) and identification of tools and equipment.
- The "DO NOT USE EQUIPMENT" holder should be displayed before inspection.
- Inserts are available in Red, Green and Yellow allowing you to colour-code your system.
- Please note that Microtag kit does not include inserts.

Kit Contents

20 x Holders
40 x Cable Ties
1 x Pen

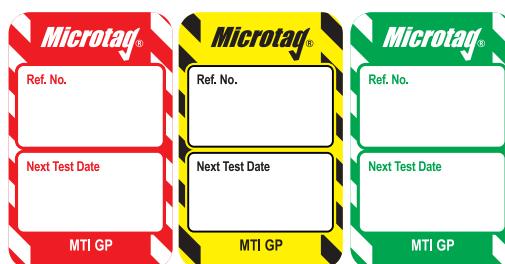
Code	Description	Price
SCF14	Kit	£36.78



Inserts

* Replace asterisk with required colour,
R = Red, Y = Yellow, G = Green.

Code	Qty	Price
SCF13/*	20	£9.84



Inserts

* Replace asterisk with required colour,
R = Red, Y = Yellow, G = Green.

Code	Qty.	Price
SCF15/*	20	£9.84



Unitag®

An ideal solution for valves and pipeline, with a unique permanent locking system to help ensure a secure means of attachment.

- Save valuable time when preparing safety audits and provide a clear inspection trail.
- Fitted to pipelines and valves, the Unitag® allows you to permanently colour-code your system.
- Inserts are available in 3 colours, Red, Green and Yellow.
- The inserts and holders are highly versatile making the valve or pipe instantly visible at a point of use.
- Unitag® guarantees a secure attachment – once locked the tag can only be removed by using wire cutters or pliers.



Kit Contents

20 x Holders
(each with 150mm long stainless steel strop)
1 x Pen
Inserts are sold separately.



Code	Qty.	Price
SCF22*	20	£9.84

*Replace asterisk with required colour
R = Red, Y = Yellow, G = Green.

Code	Description	Price
SCF21	Kit	£65.82



Fire Equipment Tags®

Utilise inspection tags for fire equipment to increase safety and communication in the workplace.

- Insert clearly displays the 'Next Insp. Date Due' and a reference to communicate when equipment is considered fit for use.
- When equipment has not been tested or is not safe the insert is removed and a prohibition symbol is clearly displayed.
- Holder can be attached easily to electrical equipment in a clearly visible location using split ring or cable ties.



Kit Contents

20 x Holders
20 x Inserts
1 x Pen

Code	Description	Price
LOT0083	Fire Equipment Nanotag Kit	£42.99
LOT0084	Fire Equipment Replacement Inserts - Pack of 20	£11.95



Electrical Equipment Tags®

Ensure status of electrical equipment is visible at the point of use.

- Small unobtrusive tag holder is designed to be easily seen on equipment.
- A reference number and next inspection due date can be written on insert after testing is carried out.
- If equipment has not been tested or is not fit for purpose the insert is removed and a prohibition message is displayed automatically.
- Holder can be attached easily to equipment using split ring or cable ties.



Kit Contents

20 x Holders
20 x Inserts
1 x Pen



Code	Description	Price
LOT0080	Electrical Equipment Tag Kit	£42.99
LOT0082	Electrical Equipment Replacement Inserts - Pack of 20	£11.95



Isotag®

Isotag is a complete tagging system to help control mechanical and electrical isolation procedures.

- Isotag helps prevent accidents and eliminates downtime through effective, shared communication amongst workers.
- Current operational status is instantly visible to all individuals.
- An Isotag is a 2-part perforated tag that consists of 2 identical halves, the top half is attached to the isolation point (such as a valve) and the bottom half is stapled to the permit-to-work.
- When the task is completed both parts can be consolidated.

Code	Qty.	Price
SCF23	10	£19.99
SCF24	50	£54.00



Tietag®

An economical scaffolding status management tag system which helps to remind site personnel not to remove scaffolding ties for the requirement of testing.

- There are 2 types of Tie Tag available: A prohibition "Warning" tag for those ties not being tested and a "Test" tag which records specific scaffolding test date, safe working load and has a unique reference number for ongoing monitoring.
- The tags are weatherproof, UV protected and durable to withstand the toughest industrial environments.
- The tags are compliant with The Safety Signs and Signals Regulations.
- For a totally customised solution to suit your needs including branding, and inspection data, please call for more details.

Code	Description	Qty.	Price
SCF39	Tietag 'Test'	50	£47.26
SCF40	Tietag 'Warning'	50	£47.26



SCF39



SCF40



Forkliftag®

The complete status tagging system for forklift trucks.

- Control pre-shift inspections and maintenance of forklift trucks.
- The holder and insert systems ensure that inspections are carried out on a daily basis.
- A number of fixing options are available to attach the holder to the forklift truck, these include: adhesives, screws or cable ties.
- The inserts display an easy-to-follow pre-use operator checklist on the front of the facility to record 32 inspections on reverse.
- If the forklift fails an inspection "DO NOT USE" is displayed on the holder.
- Use in conjunction with the Forklift Awareness Wallchart.
- Pack of 10 holders also comes with a pen

Kit Contents

2 x Holders
10 x Inserts
1 x Pen
Replacement Inserts are sold separately.

Code	Description	Price
SCF16	Kit	£28.98



Wallchart

Code	Price
WC210	£22.75



PACK OF
10

Holder

Code	Price
SCF29	£55.76



Inserts

Code	Qty.	Price
SCF17A	10	£13.20
SCF17B	50	£54.90



Chemtag®

The complete hazardous substance status tagging system.

- The inserts contain pertinent information on the specific risks the hazardous substances pose including substance type, hazards and precautions, emergency details/actions on safe disposal.
- Helping with your compliance with the COSHH Regulations, this system helps to prevent accidents and efficiently manages inspections.
- Once the inserts are removed the holder will display "DO NOT USE".
- Pack of 10 holders also comes with a pen



Inserts

Code	Qty.	Price
LOT0076	10	£10.50



Holder

Code	Price
LOT0075	£48.75

PACK OF
10

Worker Emergency ID Tag

Fits easily to the exterior of each workers hard hat

- Securely stores critical and potentially lifesaving ID information in the event of an emergency.
- Security flap protects the workers information.
- 100% waterproof, can be used in extreme conditions.
- Helmet safe, will not damage or weaken the helmet.
- Lightweight weighs less than 8g.
- Self adhesive strip on the back for easy fixing.



Code	Description	Price
SCF62	With Window	£4.95
SCF63	Without Window	£3.95

Single Scafftag Kit



Designed for single application use.

Kit contains:
1 Standard Insert and
1 Holder.

Code	Description	Price
SCAFFKIT	Single use kit	£6.99

Single Laddertag Kit

Designed for single application use. Kit contains 1 Standard Insert and 1 Holder.



Code	Description	Price
LADKIT	Single use kit	£6.99